



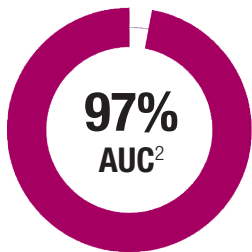
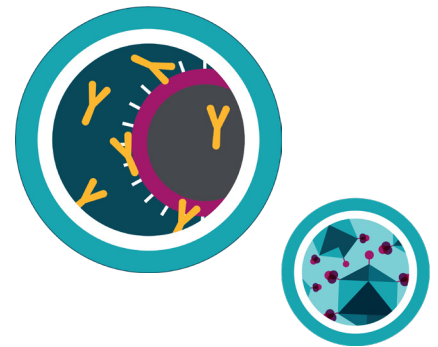
Our immune system is built to communicate.

Our mission is to listen.

We apply machine learning to translate the complex signaling of the immune system into simple, actionable diagnostic insights. MeMed's AI-based diagnostics address key clinical and medical challenges in infectious diseases and inflammatory disorders.

## MeMed BV

Bacterial and viral infections are often clinically indistinguishable and can lead to inappropriate patient management and antibiotic misuse.<sup>1</sup> MeMed BV® is the first FDA-cleared host-immune response assay for accurately distinguishing between bacterial and viral infections in just 15 minutes helping physicians make faster, more informed treatment decisions.



## MeMed BV performance

MeMed BV performance has been validated in multi-national, double-blind clinical studies and real world settings on over 20,000 patients in Europe, Israel and the United States.<sup>2-7</sup> These studies have consistently demonstrated compelling performance results in different clinical settings, age groups, and patients with different clinical syndromes.

## MeMed Key

MeMed Key® is a cutting edge, compact immunoassay platform that makes it possible to conduct highly sensitive, quick, multiplexed protein measurements that previously could only be done on large, expensive central lab equipment. Together, MeMed Key and MeMed BV help physicians make better decisions in the management of patients with acute infections.



[www.MeMed.com](http://www.MeMed.com)

1. Oved, K. et al. PLoS One (2015) 2. The Apollo Clinical Study (NCT04690569), MeMed data on file. 3. Srugo, I. et al. Pediatrics (2017) 4. van Houten, C. B. et al. Lancet Infect Dis (2016) 5. Mor, M., et al. PLoS One (2023) 6. Papan, C., et al. Clin Microbiol Infect (2021) 7. The Observer study, MeMed data on file. ©2023 MeMed, Ltd. All rights reserved. MeMed BV and MeMed Key are FDA cleared and CE Marked. MeMed BV and MeMed Key are registered trademarks of MeMed. DOC00060-US Rev. 1.

