

NAMSS

47th

EDUCATIONAL

CONFERENCE & EXHIBITION

Orlando, Florida | September 10 – 13, 2023

Building Better:
Setting the Foundation
for the Future of the Profession

Are You Ready for Integration? Spreadsheets, Databases, Oh My!!!

Cheryl Cisneros, CPMSM, CPCS, RN, BSN
HealthCare Consultant

#NAMSS23



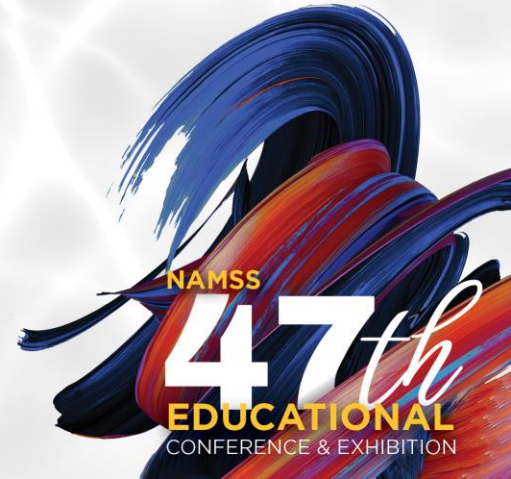


**Cheryl Cisneros, RN, BSN, CPCS, CPMSM
Healthcare Consultant**

Disclosure Statement for NAMSS 23 Conference

I have no relevant financial relationships to
disclose

#NAMSS23



Agenda

Provider Data Management

Structure

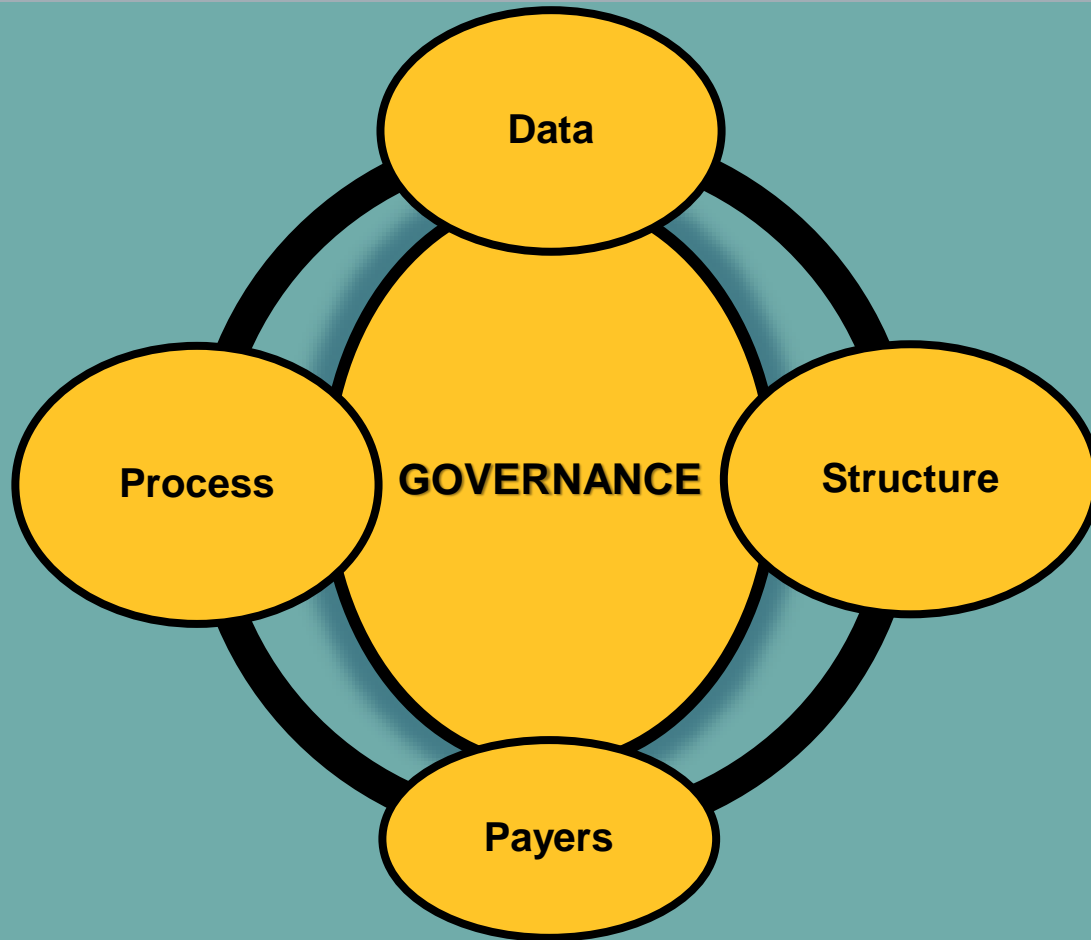
Payer Management

Process & Accountabilities



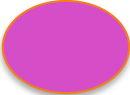
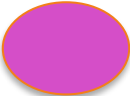

*Your organization's
Strategic Goal is to
successfully integrate
workstreams for your
organization that includes
Enrollment, Medical Staff,
Credentialing, Privileging,
and all provider data.*

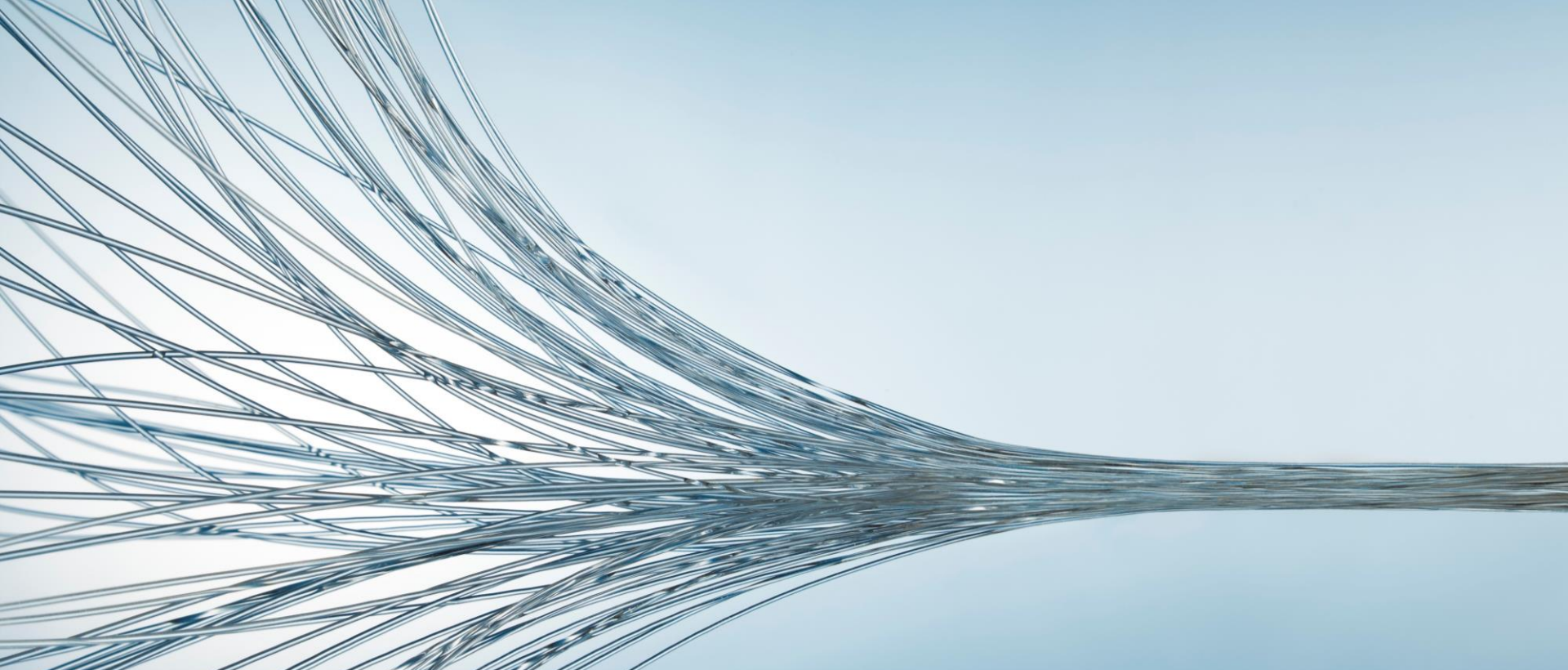




#1 Poll Question

Where is your provider data stored?

-  Provider data is stored in multiple data sources.
-  Provider data is stored in one source.
-  We are in the process of moving to one source.

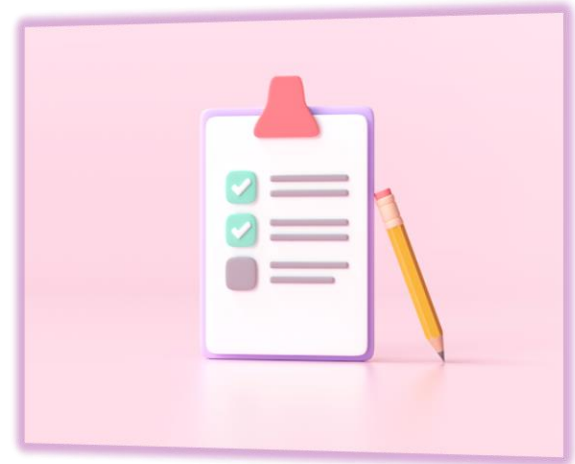


Provider Data Management

Provider Data Sources

What are **all** the provider data sources?

- ✓ Databases
- ✓ Shared drives
- ✓ Spreadsheets
- ✓ Staff personal drives
- ✓ Paper files



Internal Project Team Members

Determine who will be the core team members

- ✓ Project Manager
- ✓ Workstream Leads
- ✓ Subject Experts
- ✓ IT Lead

Collaborative Data Standards



COLLECT



ANALYSIS

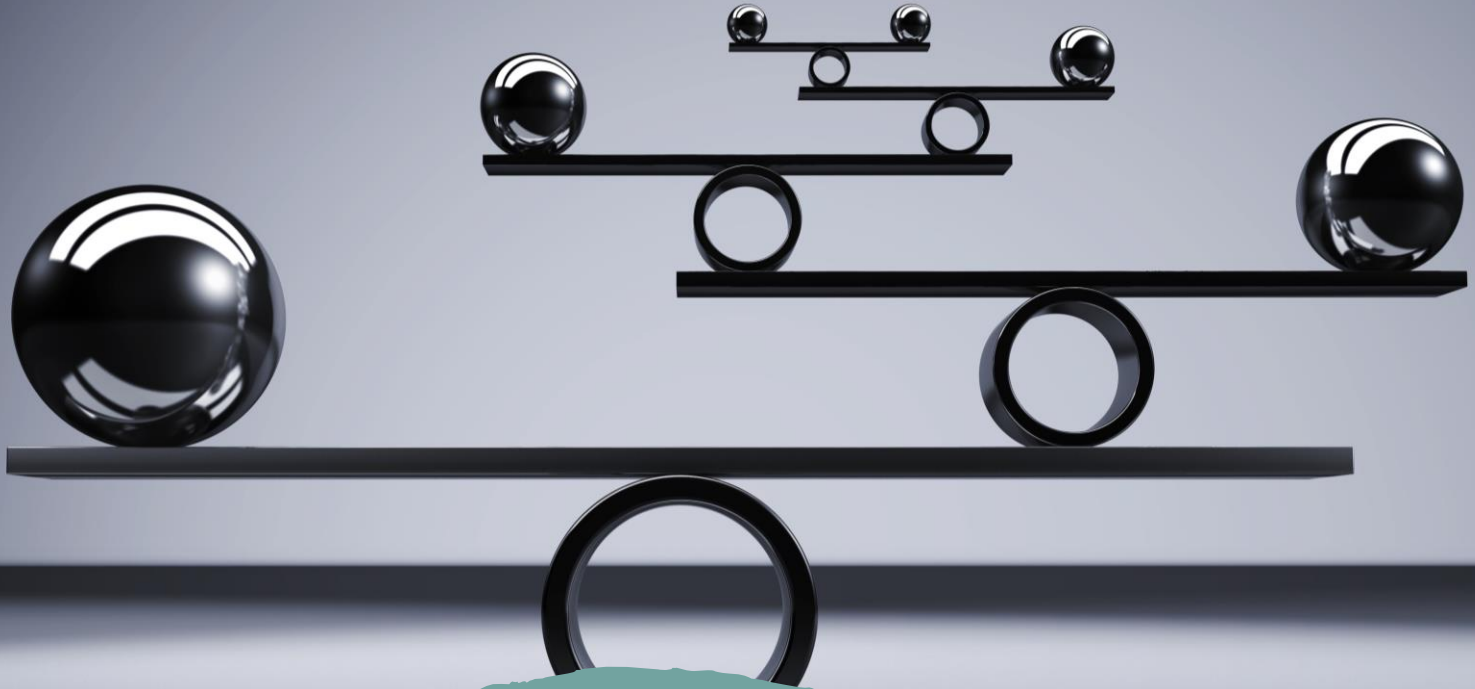


**CREATE STANDARD
DATA STANDARD**

Considerations

Allow time for key project team members to complete the following

- ✓ Data validation
- ✓ Revisions
- ✓ Data validation
- ✓ Sign off
- ✓ Integration with downstream data sources



Structure

Structure Considerations

- Hospital Medical Staff(s)
- Surgery Centers
- Enrollment
- CVO – Internal
- CVO – External Commercial
- Payer Contracts
- Internal Health Plan(s)

Analysis of Structure

- Determine how current stored data is structured for all workstreams.
 - ✓ Facility(s)
 - ✓ Tax IDs
 - ✓ Payers
 - ✓ Workstream crucial data
- How will that look in a single solution?
- What are the vendor best practice recommendations?

Key Crucial Data Considerations

Office Locations

Specialties

Taxonomies

Licenses

Certifications

Education

Training

Work History



Data Governance & Integrity

Data Governance Committee

- Chair
- Workstream voting member(s)
- Ad Hoc member(s)
- Create charter
- Create policy and procedure
 - ✓ Define accountabilities
 - ✓ Process for review and approval

Ongoing Provider Data Maintenance

Defined in Data Governance Policy

- Who is accountable?
- What are the data fields?
 - ✓ Degree
 - ✓ License expiration date
 - ✓ Date on staff
 - ✓ Next recredentialing date
- What is the frequency?
- Opportunity for education

Payer Contract Management








Who are the Payers?

- Enroll workstreams with unique payer contracts
- Payer contractual obligations
- Regulatory body requirements
- State and Federal regulatory body requirements

#2 Poll Question

What are the total number of payer forms that you are required to submit to contracted payers?

-  1 – 20 payer forms
-  21 – 40 payer forms
-  41 – 60 payer forms
-  Greater than 60 payer forms
-  We are 100% delegated, no payer forms we send rosters

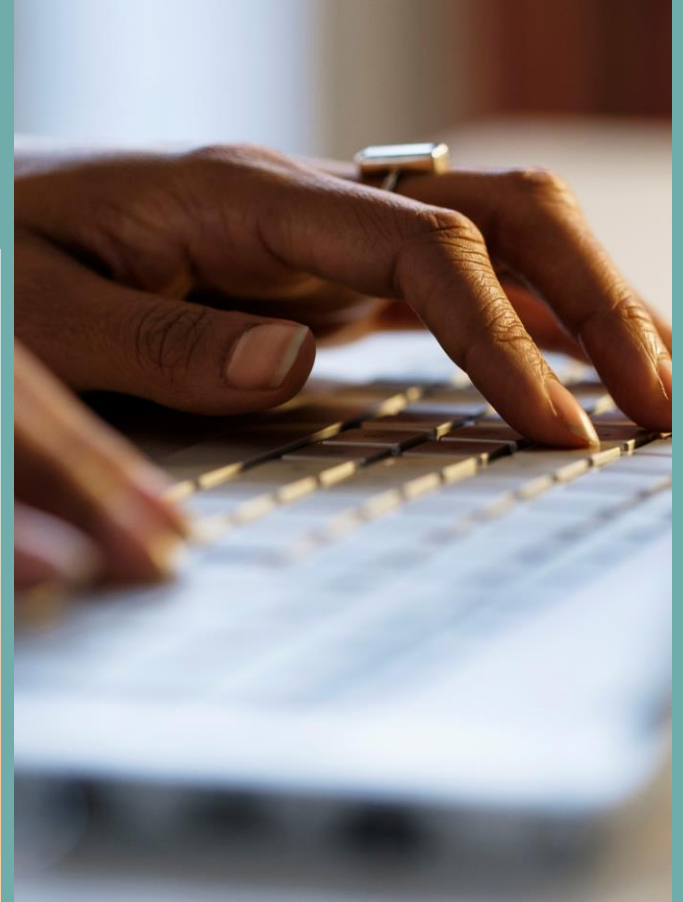
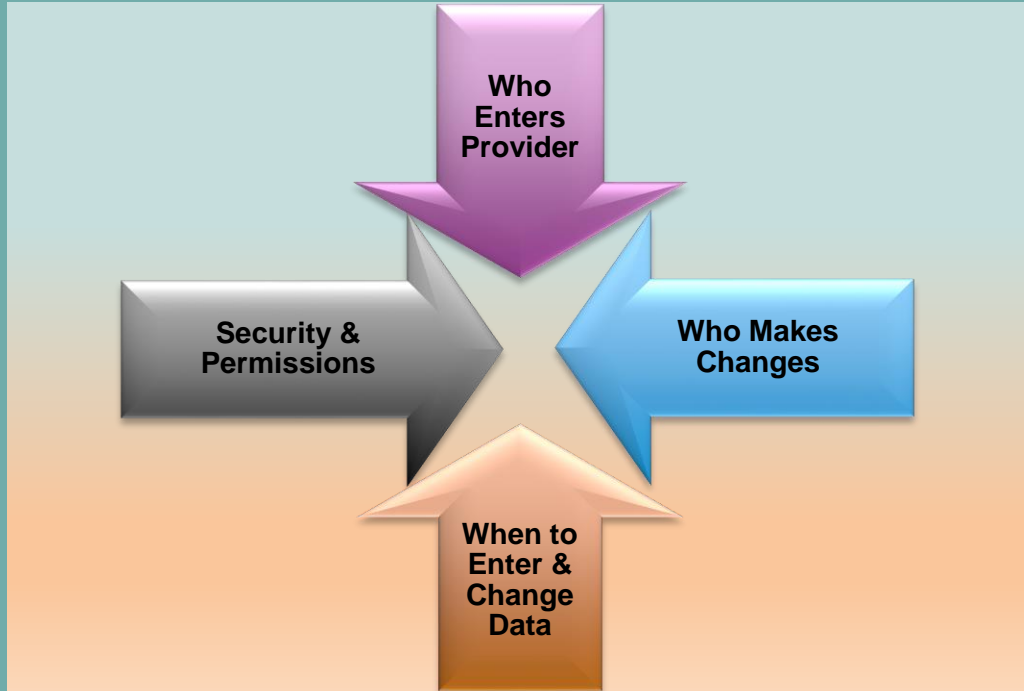
Payer Forms and Portal

- What payers' forms are required?
- What payers have portals?
- Determine how will you submit enrollment
- If software offers automation, consider the time to -
 - ✓ Create
 - ✓ Configure
 - ✓ Test and Refine



Processes
and
Accountabilities

Key Accountabilities



#3 Poll Question

How many of you have centralized medical staff, credentialing, privileging, and enrollment processes?

- Yes, we have completed centralization.
- We are in the process of centralizing.
- We plan to centralize next year.
- We have no plans to centralize.
- No need to centralize, we only complete enrollment.

Where to Begin

- Determine required processes
- When to launch process(s)?
- What provider data collection / forms?
- What verifications?



**The Goal is to Eliminate
Duplication & Redundancy**

Types of Workflow Processes

- Recruitment / Onboarding
- Application Processing
 - ✓ *Initial*
 - ✓ *Reappointment / recredentialing*
- Verification Process
- Payer Enrollment
 - ✓ *Initial*
 - ✓ *Revalidation – provider and/or office locations*
 - ✓ *Changes – adds, changes and terminations*
 - ✓ *Initial & Revalidation for Facility / Organizational Providers*
- Approval Processes

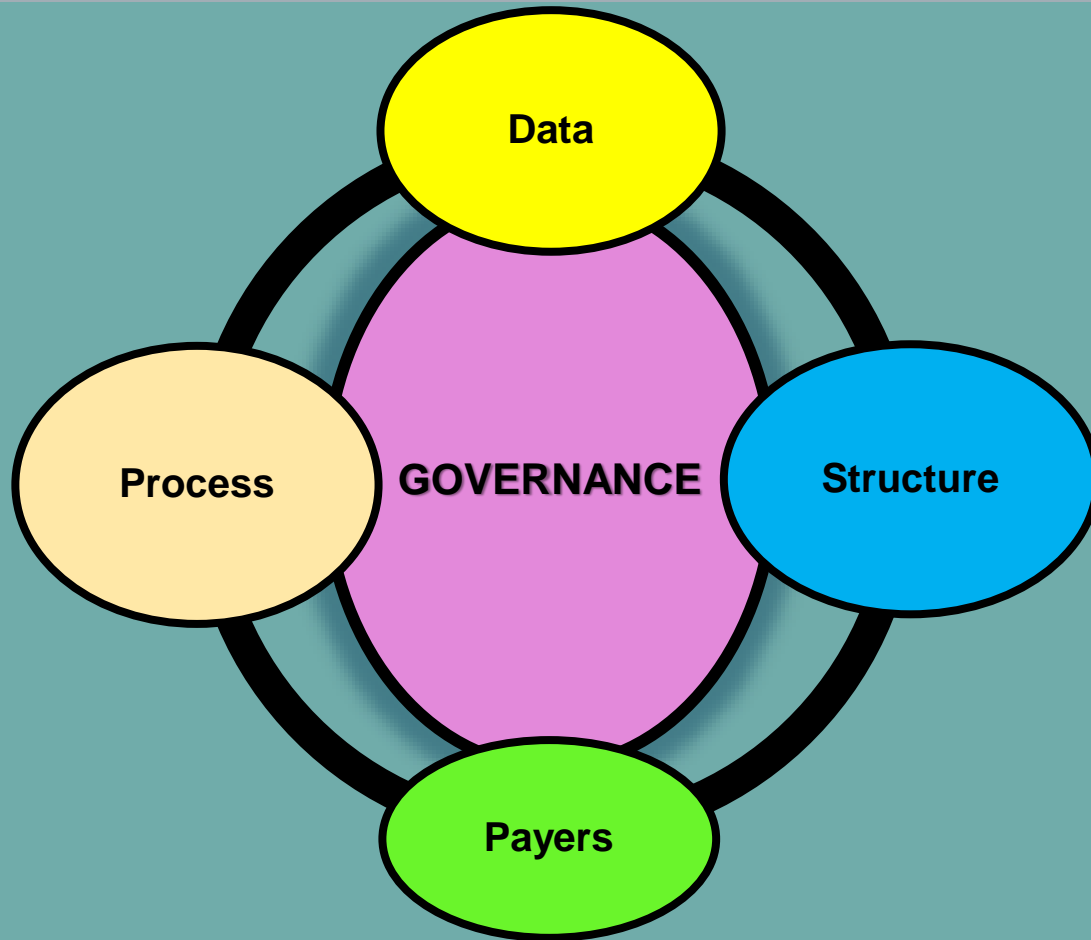
#4 Poll Question *Select ALL that apply.*

Where do you send provider data in your organization?

- Billing database
- Provider warehouse
- Provider directory
- Provider clinics / offices
- Internal Health Plan, ACO, and/or CIN
- We do not send data

Outbound Reporting

- Internal
 - ✓ Internal directory
 - ✓ Patient referrals
 - ✓ Payer effective dates
- External
 - ✓ Payer contract requirements – rosters, add, changes and terminations
 - ✓ Public-facing directories



“Life throws challenges and every challenge comes with rainbows and lights to conquer it.” *Amit Ray*





Building Better:
Setting the Foundation
for the Future of the Profession