

PRELIMINARY PROGRAM

# ISASS 22

22<sup>ND</sup> ANNUAL CONFERENCE

INNOVATIVE TECHNOLOGIES, TECHNIQUES AND TIPS FROM AROUND THE WORLD

JUNE 1-4, 2022 | THE ATLANTIS HOTEL | THE BAHAMAS

**PRESIDENT:**



DOMAGOJ  
CORIC, MD

**PROGRAM CHAIRS:**



SIGURD  
BERVEN, MD



ADAM  
KANTER, MD



HAN JO  
KIM, MD



LUIS  
TUMIALÁN, MD

JOINTLY PROVIDED BY:



# CONFERENCE HIGHLIGHTS

## CALL FOR ABSTRACTS



Submit your research for a podium or e-poster presentation at ISASS 2022!



**Visit here**  
to learn more.



Submission deadline:  
**February 25, 2022**

## GRANTS AVAILABLE FOR YOUNG SURGEONS

If you are a resident, fellow or in the first 3 years of practice, you are invited to apply for a grant to attend ISASS22.

- E-mail your CV to [info@isass.org](mailto:info@isass.org) by March 15.
- Notifications of acceptance will be sent by March 30.
- Attend a Breakfast Workshop, a Young Surgeon Luncheon, five exhibit booths and Corporate Dinner on Thursday evening.
- After the conference, you'll receive \$750 in grant funds plus free ISASS membership for 1 year!

## KEYNOTE SPEAKERS:



**Regis W. Haid, MD, FAANS**  
Atlanta Brain and Spine Care  
Atlanta, GA



**Alexander Vaccaro, MD, PhD, MBA**  
Rothman Institute  
Philadelphia, PA

## INVITED FACULTY:

Oscar Alves, MD  
Neel Anand, MD  
Ali Araghi, MD  
Anthony Asher, MD  
Massimo Balsano, MD  
Gregory Basil, MD  
Carlo Bellabarba, MD  
Svante Berg, MD  
Sigurd Berven, MD  
Michael Bohl, MD  
Charlie Branch, MD  
Byron Branch, MD  
Ernest Braxton, MD  
Sam Chewing, MD  
Dom Coric, MD  
Kenneth Crandall, MD  
Andrew Dailey, MD  
Rick Fessler, MD

Kevin Foley, MD  
Rolando Garcia, MD  
Zohar Ghogawala, MD  
Steven Glassman, MD  
Jeff Goldstein, MD  
Matt Gornet, MD  
Robert Gunzberg, MD  
Richard Guyer, MD  
Michael Hrycelak, MD  
Wellington Hsu, MD  
Meng Huang, MD  
Sraivst Iyer, MD  
Adam Kanter, MD  
Larry Khoo, MD  
Han Jo Kim, MD  
Paul Kim, MD  
John Knightly, MD  
Brian Kwon, MD

Daniel Laich, MD  
Todd Lanman, MD  
Kai-Uwe Lewandrowski, MD  
Rob Louis, MD  
Isaac Moss, MD  
Praveen Mummaneni, MD  
Eric Nottmeier, MD  
Pierce Nunley, MD  
David Okonkwo, MD  
Paul Park, MD  
Peter Passias, MD  
Frank Phillips, MD  
Luiz Pimenta, MD  
Kris Radcliff, MD  
Zak Ray, MD  
Vincent Rossi, MD  
Rick Sasso, MD  
Dan Sciubba, MD

Matthew Scott-Young, MD  
Chris Shaffrey, MD  
Jeremy Steinberger, MD  
Michael Steinmetz, MD  
Andrew Sumich, MD  
Marek Szpalski, MD  
William Taylor, MD  
Luis Tumulán, MD  
Juan Uribe, MD  
Mike Wang, MD  
Peter Whang, MD  
John Wilson, MD  
Huilin Yang, MD  
Christopher Yeung, MD  
Jack Zigler, MD

# PROGRAM

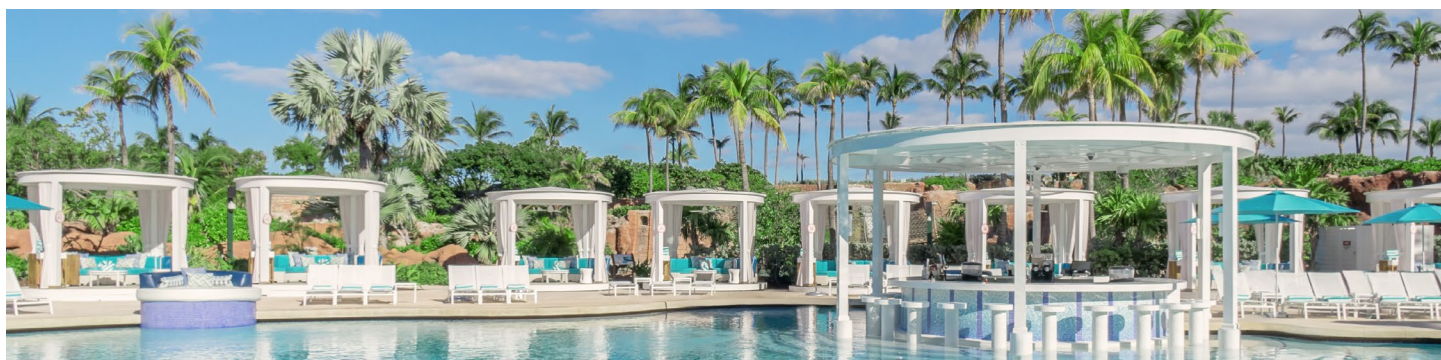
## WEDNESDAY, JUNE 1

12:00 PM	Registration Opens
2:30 - 5:00 PM	<b>Pre-Course Sessions 1 &amp; 2: Arthroplasty &amp; Endoscopy (Non-CME)</b> <b>Session 1:</b> International Spinal Arthroplasty Symposium <b>Session 2:</b> Endoscopic Spine Surgery - Why and How to Bring It Into Your Practice
4:30 PM	Exhibits Open
4:30 - 5:15 PM	Refreshment Break with Exhibits
5:15 - 6:30 PM	<b>General Session 1:</b> Case Controversies
6:30 - 7:30 PM	Welcome Reception with Exhibits

## THURSDAY, JUNE 2

7:00 AM	Registration Opens
7:30 - 8:20 AM	Corporate Workshops* with Breakfast
8:00 AM	Exhibits Open
8:00 - 8:30 AM	Continental Breakfast with Exhibits
8:30 - 10:30 AM	<b>Session 2:</b> What Every Surgeon Should Know About: Spinal Deformity & Enabling Technologies & Integrative Technologies
10:30 - 11:00 AM	Refreshment Break with Exhibits
11:00 AM - 12:30 PM	<b>Session 3:</b> Free Papers
12:30 - 1:15 PM	Lunch with Exhibits & Young Surgeon Lunch
1:15 - 2:45 PM	<b>Concurrent Sessions 4, 5, &amp; 6</b> <b>Session 4:</b> Enhanced Recovery After Spine Surgery & Healthcare Economics <b>Session 5:</b> ASCs: The Good and the Bad <b>Session 6:</b> ASCs: Biomechanics and Regenerative Therapies and Biologics
2:45 - 3:15 PM	Refreshment Break with Exhibits
3:15 - 5:30 PM	<b>Session 7:</b> Free Papers & Wows and Woes of Incorporating New Techniques and Technology into Your Practice

\*Workshops and Technology Updates are not CME-accredited.



# PROGRAM

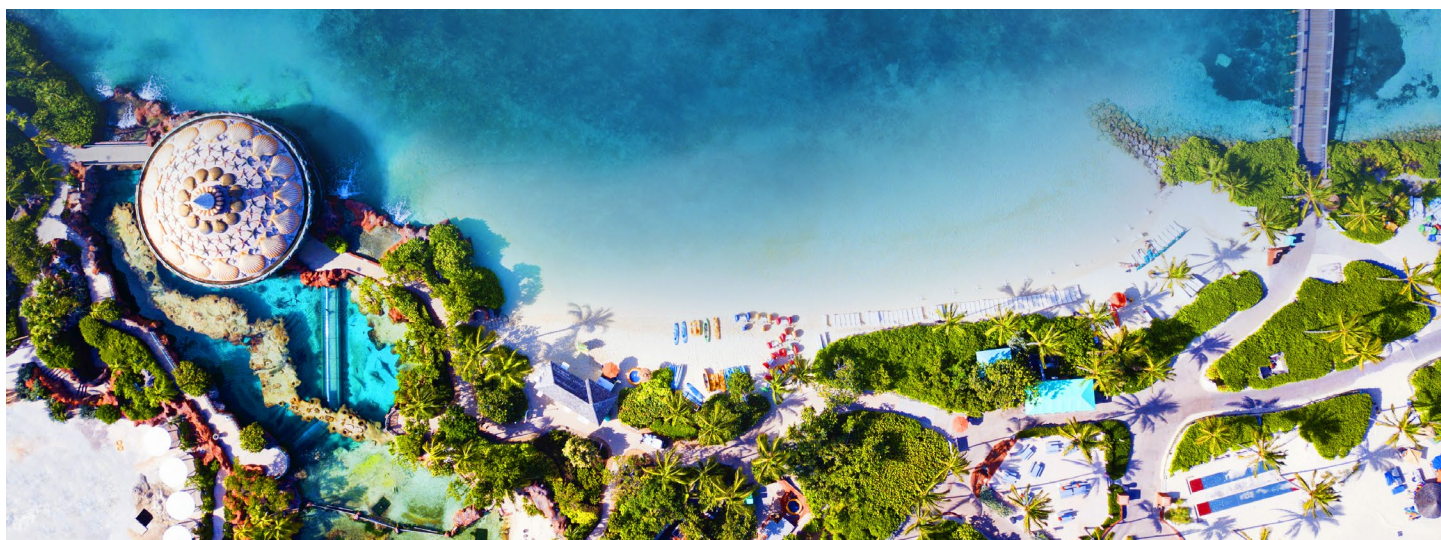
## FRIDAY, JUNE 3

7:00 AM	Registration Opens
7:30 - 8:20 AM	Corporate Workshops* with Breakfast
8:00 AM	Exhibits Open
8:00 - 8:30 AM	Continental Breakfast with Exhibits
8:30 - 10:30 AM	<b>Session 8:</b> What Every Surgeon Should Know About Trauma & Patient Outcomes
10:30 - 11:00 AM	Refreshment Break with Exhibits
11:00 AM - 12:30 PM	<b>Concurrent Sessions 9 &amp; 10</b> <b>Session 9:</b> Free Papers <b>Session 10:</b> Free Papers
12:30 - 5:15 PM	Open Afternoon
5:15 - 6:30 PM	<b>Session 11:</b> Case Controversies
6:30 - 8:30 PM	Beach Bash

## SATURDAY, JUNE 4

7:00 AM	Registration Opens
7:30 - 8:20 AM	Corporate Workshops* with Breakfast
8:30 - 10:15 AM	<b>Session 12:</b> Free Papers
10:15 - 10:35 AM	Refreshment Break
10:45 AM - 12:10 PM	<b>Session 13:</b> Awards, Presidential Address, IJSS Address
12:10 - 1:15 PM	<b>Session 14:</b> MISS - What's New? What's Coming? Show Me Your Outcomes & Where's the Beef? The Great Debates
1:15 PM	Adjourn

\*Workshops and Technology Updates are not CME-accredited.



# REGISTRATION

REGISTER ONLINE AT [ISASS.ORG](http://ISASS.ORG)!



**March 2nd, 2022:**  
Early-bird Registration  
Discount Expires



**May 4th, 2022:**  
Advance Registration  
Closes

	Early by March 2	Advance by May 4	On-Site after May 4
<b>Surgeon</b>	\$750 (member) \$1050 (non-member)	\$850 (member) \$1150 (non-member)	\$950 (member) \$1250 (non-member)
<b>Allied Health (PA, NP, etc.)</b>	\$450 (member) \$750 (non-member)	\$550 (member) \$850 (non-member)	\$650 (member) \$950 (non-member)
<b>Resident/Fellow/Student</b>	\$150 (member) \$275 (non-member)	\$250 (member) \$375 (non-member)	\$250 (member) \$375 (non-member)
<b>Surgeon-Emerging Country*</b>	\$100 (member) \$300 (non-member)	\$150 (member) \$350 (non-member)	\$250 (member) \$450 (non-member)

\*Practice in Lower or Lower-Middle Income Country as Defined by the World Bank

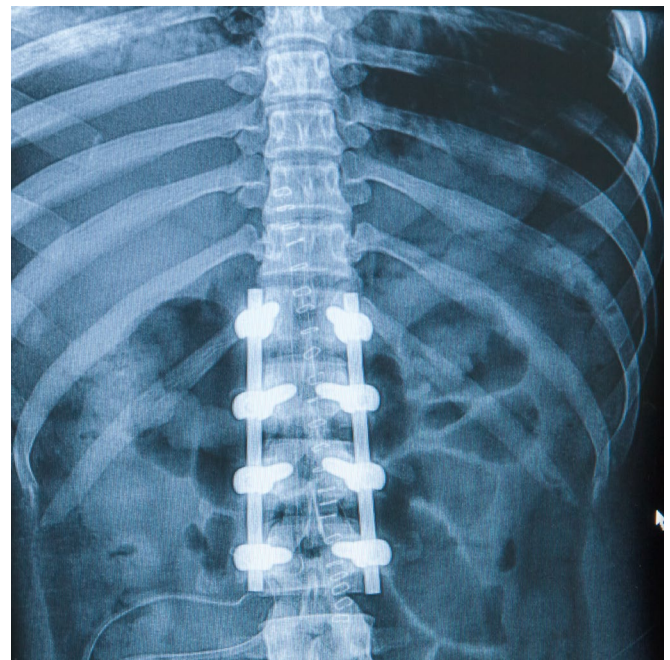
## Payment Policy

Please note that check or wire transfer payments for registration must be received by May 4, 2022. If payment is not received by this date, your registration will be cancelled.

## Cancellation Policy

Cancellations must be made in writing to Val Broyles at [vbroyles@broad-water.com](mailto:vbroyles@broad-water.com). Full refunds, less a \$150 administrative fee, will be provided for cancellations received by May 4, 2022. Cancellations after this date will not be refunded unless there is a documented medical or travel emergency or institutional travel policy.

[Register Here](#)



# HOUSING DETAILS

Atlantis Paradise Island is a lush, oceanside resort located on Paradise Island. A dynamic destination that launched over two decades ago as a first-of-its kind modern marvel of nature and engineering, Atlantis has embarked on a new chapter tied to a meaningful connection with the ocean, Bahamian culture and the spirit of the property's over 7,500 employees. The resort's new, immersive programming connects guests to the rich history, art, people, food and festivities of The Bahamas.



## The Atlantis Hotel

One Casino Drive  
Paradise Island,  
The Bahamas  
[atlantisbahamas.com](http://atlantisbahamas.com)

## Room Rate:

The Royal Run of House: \$249/night single/double occupancy *(plus taxes and fees)*

The Cove Run of Suites: \$479/night single/double occupancy *(plus taxes and fees)*

## Taxes & Fees

All guests of Atlantis are subject to a 23.20% charge per night that includes VAT and other taxes and surcharges, the Paradise Island Tourism and Development Association levy, the Nassau Paradise Island Promotion Board levy and compensation for servicing your reservation.

In addition to taxes, guests will be required to pay a Resort Fee of \$28.00 per room, per night at the Atlantis Royal and Cove. Bellman is \$6 one-time charge, 12 years and over Pool/Beach Attendant/Lifeguard is \$1.60 per person, per night, 12 years old and over.

No charge if 11 or younger. If 12 years old and up, the rate is \$50 additional per night. If 12 years and older add as an adult.

\*\*Cove additional person fee \$50 for Juniors, 12-17 years old and \$75 for adults, 18 years and older\*\*

*Please be advised that all mandatory gratuities, taxes, levies, surcharges and service fees are subject to change.*

## Deposit Policy

Guests will be required to pay a 2-night deposit at the time of booking via credit card. Additional nights will be charged onsite.

## Cancellation Policy

Guests may cancel up to (30) thirty days prior to arrival. Should any guest cancel within 30 days of arrival, the 2-night deposit will be retained.



## RESERVATIONS PROCEDURE

**Make your reservation by May 4th to receive the discounted rate!**

Call The Atlantis to book your reservation at (800) 386-4786 for United States & Canada or (954) 809-2714 for International and mention the "ISASS Meeting" for the group rate or book online.

## Book online



# CME INFORMATION

## Target Audience

This course is designed for orthopaedic and neurological spine surgeons, fellows, and residents.

## LEARNING OBJECTIVES

As a result of this activity, the participant should be better able to:

- Discuss research results in basic science, treatments and technologies in the field of spine surgery
- Evaluate and recommend treatment and surgical options for patients with various spine conditions
- Describe and compare innovative technologies in both assessment and treatment options for various spine conditions

## Joint Providership

This program is jointly provided by Medical Education Resources, Inc. and ISASS.



JOINTLY ACCREDITED PROVIDER™  
INTERPROFESSIONAL CONTINUING EDUCATION

### Accreditation Statement

In support of improving patient care, this activity has been planned and implemented by Medical Education Resources (MER)

and ISASS. MER is jointly accredited by the Accreditation Council for Continuing Medical Education (ACCME), the Accreditation Council for Pharmacy Education (ACPE), and the American Nurses Credentialing Center (ANCC), to provide continuing education for the healthcare team.

## Physician Credit

MER designates this live activity for a maximum of 15 *AMA PRA Category 1 Credit(s)™*. Physicians should claim only the credit commensurate with the extent of their participation in the activity.

## Disclosure of Conflicts of Interest

Medical Education Resources insures balance, independence, objectivity, and scientific rigor in all our educational activities. In accordance with this policy, MER identifies conflicts of interest with its instructors, content managers, and other individuals who are in a position to control the content of an activity. Conflicts

are resolved by MER to ensure that all scientific research referred to, reported, or used in a CME activity conforms to the generally accepted standards of experimental design, data collection, and analysis. MER is committed to providing its learners with high-quality CME activities that promote improvements or quality in health care and not the business interest of a commercial interest.

## FDA (United States)

Some drugs and medical devices demonstrated during this course have limited FDA labeling and marketing clearance. It is the responsibility of the physician to be aware of drug or device FDA labeling and marketing status.

## Commercial Support

Various medical companies have been invited to exhibit and provide grants for this course. Full disclosure of financial and other support will be provided in the course materials.

## Disclaimer

ISASS, MER, and BroadWater disclaim any and all liability for injury or other damages resulting to any individual attending a scientific meeting and for all claims that may arise out of the use of techniques demonstrated therein by such individuals, whether these claims shall be asserted by a physician or any other person.